

UNIVERSITY OF LATVIA

VALDIS VITOLINS

**BUSINESS PROCESS MODELING USING
A METAMODELING APPROACH**

Summary of Doctoral Thesis

Advisor:
Professor, Dr. habil. sc. comp.
AUDRIS KALNIŅŠ

Riga 2007

The thesis was elaborated with support of ESF
(European Social Fund)



Advisor:

*Professor, Dr. habil. sc. comp. Audris Kalnins
University of Latvia*

Referees:

*Professor, Dr. habil. sc. comp. Janis Barzdins
University of Latvia*

*Assoc. Professor, Dr. sc. ing. Marite Kirikova
Riga Technical University*

*Professor, Ph. D. Olegas Vasilecas
Vilnius Gediminas Technical University*

The defense of the thesis will take place in an open session of the Council for Promotion in Computer Science, the University of Latvia, in the Institute of Mathematics and Computer Science, the University of Latvia (*Room 413, Raiņa bulv. 29, Rīga*), on *11. September 2007*.

The thesis (collection of works) and its summary are available at the Library of the University (*Kalpaka bulv. 4, Rīga*).

Head of the Council

Janis Barzdins

Table of Contents

| | |
|------------------------------------------------------------------------------------------------------------------|------------------|
| <u>Relevance of the Thesis and Achieved Results.....</u> | <u>4</u> |
| <u>General Description of the Thesis.....</u> | <u>6</u> |
| <u>1 Modeling Business.....</u> | <u>8</u> |
| 1.1 Business Metamodels..... | 8 |
| 1.2 Main Business Concepts and their Relationships..... | 8 |
| 1.3 Concept Mapping in Different Notations..... | 10 |
| <u>2 Business Process Measures.....</u> | <u>13</u> |
| 2.1 Business Process Model..... | 13 |
| 2.2 Measure Aggregation Sample Model..... | 15 |
| 2.3 Business Process Metamodel..... | 16 |
| 2.4 Business Measure Metamodel..... | 17 |
| <u>3 Semantics of UML 2.0 Activity Diagram for Business Modeling by Means of Virtual Machine.....</u> | <u>19</u> |
| 3.1 Subset of the UML 2.0 Activity Diagram and UML Limitations..... | 19 |
| 3.2 General Description of the UML 2.0 Activity Diagram and Proposed Virtual Machine..... | 20 |
| 3.2.1 Standard Semantics of Activity Diagrams..... | 20 |
| 3.2.2 General Principles of the Developed ADVN..... | 21 |
| 3.2.3 Metamodel Extensions and Model Mapping..... | 22 |
| <u>4 Use of UML and Model Transformations for Workflow Process Definitions...24</u> | <u>24</u> |
| 4.1 Languages for Workflow Design and their Role..... | 24 |
| 4.2 Adjusting UML Activity Diagrams for Workflow Definition..... | 25 |
| 4.3 BPMN Diagrams as Another Notation..... | 27 |
| 4.4 AD to BPMN Transformation..... | 28 |
| <u>5 Conclusion.....</u> | <u>30</u> |
| <u>6 References.....</u> | <u>31</u> |
| 6.1 Referenced Papers by the Author..... | 31 |
| 6.2 Other Publications by the Author..... | 31 |
| 6.3 Other Sources..... | 31 |
| <u>1 Annex.....</u> | <u>35</u> |
| 1.1 Author's Reports on Thesis Results at International Scientific Conferences and Seminars..... | 35 |
| 1.2 Publications Included in This Thesis and Personal Contribution to the Publications by the Thesis Author..... | 35 |

Relevance of the Thesis and Achieved Results

Relevance of the thesis. The thesis discusses topics related to the development of business process management systems. Business process management systems have evolved on the basis of workflow management systems through incremental inclusion of standard information system functions, for example, resource and client management.

The application of model driven development is required to deal with the complexity of business management systems and to increase development efficiency. In contrast to conventional information systems, the behavior of business management systems is strongly affected by the business models that they execute. Thus, business process models also can be used for designing and developing business management systems using sequentially applied model transformations that adapt models to a specific execution platform.

As business management system functionality expands and business models are used for systems development, new requirements emerged for both business models and process modeling languages. Currently, there is no agreement on a single best business process modeling language; therefore, different aspects of business management systems in different development phases are described using different modeling languages.

For example, the *de facto* standard in software development, the Unified Modeling Language (UML), is not detailed enough to use in workflow modeling. The Business Process Modeling Notation (BPMN) is not explicit enough to use for software development. The execution semantics of existing languages is not detailed enough for process execution in distributed business management systems. This makes it difficult to use models in the development of business process management systems, and currently model driven development can be applied only to specific business management branches and only in specific development stages.

Therefore, it is necessary to develop an approach that supports the description of different business management aspects in different modeling languages, and which supports the transition from one language to another, both to apply a business model to a specific execution platform, and to move to an alternative modeling language. This approach could support a unified tool platform that would cover all required business process management system aspects, and information gathered in different development stages could be effectively reused.

This thesis proposes that business process modeling problems can be solved using a metamodeling approach. Metamodeling allows analysis of different modeling aspects in a unified and comprehensive way, while retaining the exact semantics of concepts. In this thesis, a methodology is developed that allows analyzing different modeling languages and comparing their concepts in detail. The thesis also describes model execution and the development of run-time measurement techniques using a metamodeling approach. Based on the developed methodology, a framework with editors for different modeling languages and for model transformations that transform concrete business models for a specific execution platform is developed.

The main results of the research.

- A notation independent business process metamodel is developed, which shows business process concepts and their relationships. This metamodel is

used as a canonical form of business process modeling languages in all further research.

- ❑ A new approach is developed for mapping business concepts from one common domain to different modeling languages using similar concepts ("semantically similar" languages). This approach is used as the basis for building model transformations.
- ❑ Exact execution semantics for the UML activity diagram (AD) is developed using a virtual machine. A methodology based on metamodels is developed. It allows defining model parameters in design-time and measuring them in model run-time. This virtual machine can be used as the basis for developing a process simulation or business process management system.
- ❑ Functionally equivalent metamodels of the most popular business modeling languages, a profile of the UML AD subset and a BPMN subset, are developed. On the basis of these metamodels, editors for these languages are developed. Model transformations are developed in the MOdeling LAnguage (MOLA) to perform transformations from AD to BPMN. Such transformations are one step in the model driven development of business management systems. By using a similar approach to transform models further into the Business Process Execution Language (BPEL), the models can be executed in real business process management systems.

General Description of the Thesis

Research on the thesis "**Business Process Modeling Using a Metamodeling Approach**" was done from 2002 to 2007 in the Department of Physics and Mathematics of the University of Latvia and in the Institute of Mathematics and Computer Science (IMCS) under the direction of Professor Audris Kalnins. This research is a continuation of the business modeling traditions established in the IMCS since 1986.

The main results of the research are published in four papers [1-4] and are presented at four international conferences. **The thesis is organized as the set of these four papers**, summarizing the author's research results in different aspects of business modeling.

The subject of the research: business models, comparison of different models and modeling techniques, and analysis of model execution using the metamodeling approach.

The goals of the research: to develop a comprehensive and exact approach to using different business process modeling aspects, process execution, measurement and transformations, using the metamodeling approach.

Research stages: research was done in several stages, starting with a general analysis of different business modeling aspects, and continuing with exact semantics of modeling languages and their execution semantics. Using exact semantics of concepts, transformations were developed to translate business models to a language executable in business process management systems. In the subsequent sections of this summary, the main problem statements are briefly described. These are described in detail in the referenced publications.

- In the first chapter, "**Modeling Business**," business process concepts and their relationships are analyzed using a metamodeling approach. This chapter describes existing business modeling languages and frameworks. The research analyzes business process execution and the business process environment, and presents information required to understand business processes and quality measures. Furthermore, a new comprehensive business process metamodel is developed. Using the developed business process metamodel, a new methodology is developed in which business modeling languages using similar concepts can be shown as views of a notation independent metamodel. The developed business process metamodel is used as a canonical form of business process concepts in all further investigations.
- In the second chapter, "**Business Process Measures**," existing business measurement approaches are reviewed, and a new approach to business process measurements is introduced. The new approach allows defining business measures in an integrated way together with process definition. In addition, a new methodology for process element measure definition and measure aggregation in process execution time is developed. For measure definition, a new UML Activity Diagram (AD) profile is developed, and measure algorithms are processed using an extended UML metamodel.

- ❑ In the third chapter, "**Semantics of the UML 2.0 Activity Diagram for Business Modeling Using a Virtual Machine**," a detailed description of UML 2.0 AD semantics is provided with a new approach using a virtual machine. AD elements required for business process modeling are introduced, and diagram execution in business processes is clarified. Furthermore, a new and simplified AD execution algorithm is developed, which, however, does not lose the original execution semantics. This is done using "push" and "pull" engines, which move tokens along activity execution paths. The proposed algorithm is useful for developing AD simulation and workflow execution engines.
- ❑ In the fourth chapter, "**Use of UML and Model Transformations for Workflow Process Definitions**," a new development approach to business management systems based on model transformations is introduced. The two most popular business modeling notations, UML ADs and BPMN, are analyzed. Required aspects of workflows are briefly discussed, and, on this basis, a natural AD profile and functionally equivalent to the BPMN subset are proposed. The semantics of both languages in the context of process execution (namely, mapping to BPEL) is also analyzed. By comparing AD and BPMN metamodels, it is shown that an exact translation from AD to BPMN is not trivial; thus, model transformations are proposed as the most effective approach for model mapping and translation. Model transformations are executed in the model transformation language MOLA, using the MOLA transformation tool.
- ❑ In the **Conclusion**, research results are analyzed in the context of the latest business modeling events, and a practical approach to business process modeling is described.

The theoretical and practical significance of the research.

This thesis describes the theoretical principles for using the metamodels of modeling languages to describe and compare these languages. It also describes how the models written in these languages can be transformed and executed. The developed business process metamodel and mapping approach are available for exact model transformations in semantically similar languages, but model transformations make it possible to obtain model equivalents even for cases with extremely complicated relations. A metamodel-based virtual machine can be used to develop model simulation or business process management systems that execute models in different modeling languages, and the machine allows performing model measurements in run-time. The developed metamodeling approaches and ideas are used to develop a modeling tool framework and different modeling language editors. This proves the effectiveness of the metamodeling approach.

Research results are used in development of business process editors in the Generic Modeling Framework (GMF, [6.3]). The GMF tool is used to develop new editors for the UML AD and BPMN modeling languages. Models created in these editors can be transformed from one to another using the MOLA transformation tool.

1 Modeling Business

1.1 Business Metamodels

Business process modeling (BPM) began as part of the business process reengineering movement in the 1990s. Initially, business models were conceptual and were used in place of software specifications where the diagrams were clearer than text. To ensure unambiguous understanding of models, the first modeling languages were introduced, and modeling tools were developed. One of the first modeling languages was defined in the Zachman framework [6.3], which was implemented in the Popkin Software System Architect tool. Other modeling languages also were implemented in tools, for example, GRAPES BM in the GRADE tool [6.3], ARIS in the ARIS tool [6.3], and other languages, such as IDEF 3 and UML 1.0 activity graphs.

As modeling languages became more concrete, tools allowed validation and simulation (e.g., ARIS, System Architect [6.3], GRADE), and specific modeling languages for workflow systems appeared (FileNet, MQ Workflow). Thus, models shifted from software specification to executable programs, and execution semantics of modeling languages became an important issue.

In 2002, when this research was started, business modeling was a broad field. The term BPM (business process *management*) was used to emphasize both the process analysis and execution aspects. The necessity to execute process models required strict requirements for modeling language semantics. Many process modeling languages and modeling frameworks explained business modeling in their own way; therefore, for integrated processing of business processes, a common approach was necessary.

The goal of this research was development of a unified modeling methodology based on a new approach using metamodeling as in UML [6.3]. As the most popular frameworks were developed before the appearance of UML (e.g., Zachman, ARIS), they were not developed as metamodels. Therefore, analysis of existing frameworks and development of a new, harmonized and comprehensive metamodel was necessary. Using a common metamodel, modeling languages using similar concepts ("conceptually similar" languages) can be shown as specific views of a harmonized metamodel.

1.2 Main Business Concepts and their Relationships

To describe a business process, two views are required. One view describes the business process itself: what actions under what circumstances are executed by performers in what order. Another view is required for process explanation: what is important for process integration in one or several enterprises. It shows the process environment: inputs (suppliers) and outputs (goods and services for customers), process relationships with other processes, as well as the meaning goals of processes, and quality measures.

An investigation of existing frameworks based on metamodels and other approaches [6.3,6.3,6.3,6.3] revealed that they were incomplete; none is sufficiently general and comprehensive. Therefore, the author offers a new business process metamodel, in which the most popular frameworks are combined. The concepts coming from different approaches are harmonized into a single metamodel to show only the essential concepts that are common in all analyzed business management methodologies.

Fig. 1 shows the business process environment metamodel developed by the author. It conforms to several of the world's leading business process management standards (e.g., the value added chain and the ISO quality standard [6.3]). The metamodel is similar to the Business Motivation Model developed by OMG [6.3]. The Business Rules Group started development of this standard in 2000, but the metamodel was developed in 2005, when it was adopted by OMG, and is still in draft form. It should be noted that, for business process resources, the input and output in the author's research is even more detailed than is required by the OMG standard. In 2006, a similar model was created as a business ontology at the University of Lausanne [6.3].

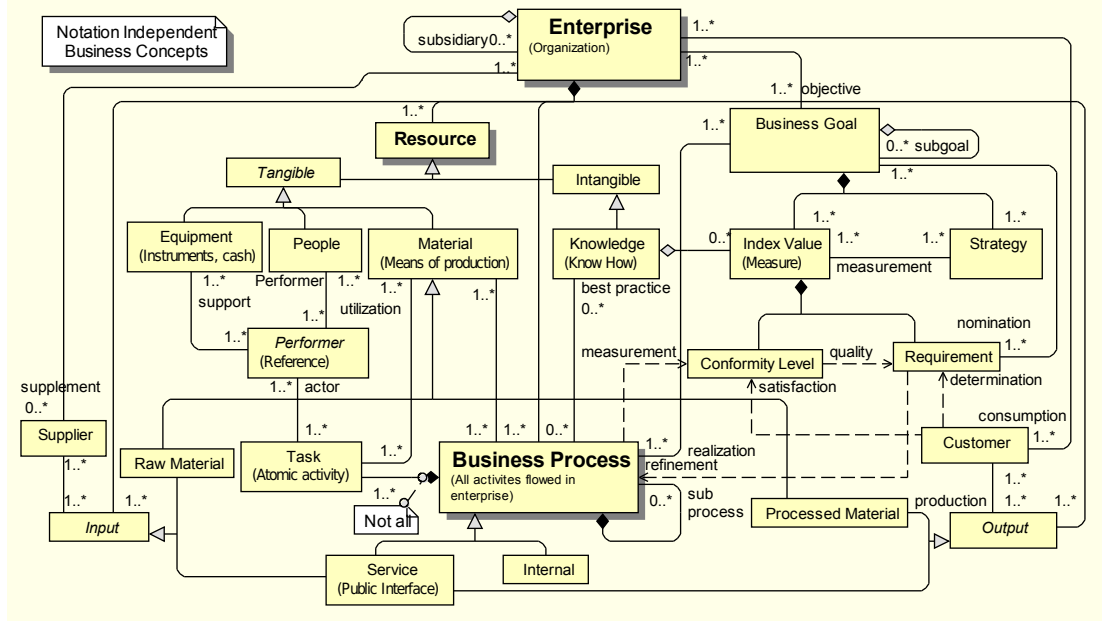


Fig. 1 Business process environment metamodel

Fig. 2 shows the business process elements required for process definition and execution. The main concept for all process modeling languages in the *Process* is the *Task*, which represents one atomic function. In different modeling languages it is named differently: in GRAPES BM and BPMN, it is named *Task*, in UML 1, *Action State*, in UML 2, *Action*, in IDEF 3, *Unit of Behavior*. A *Task* is performed by a *Performer*. A *Transition* determines the sequence in which several *Tasks* are executed. *Task* and *Transition* are the main concepts in all business modeling languages.

Most languages also have *ControlElements*, which determine process branching. A *Decision* represents the start of branching; a *Fork*, the start of parallel flows; a *Merge*, the unification of branches; a *Join*, the unification of concurrent threads. Explicit *Start* and *End* points also can be shown. However, control elements and transition connections to the control elements may differ considerably in different modeling languages. Therefore, to unambiguously map specific control elements in the analyzed UML 2.0 AD and GRAPES BM languages, additional transition subclasses are introduced: *SimpleTransition*, *Incoming transition* and *Outgoing transition*. Usage of these subclasses for explicit concept mapping is described in Section 1.3.

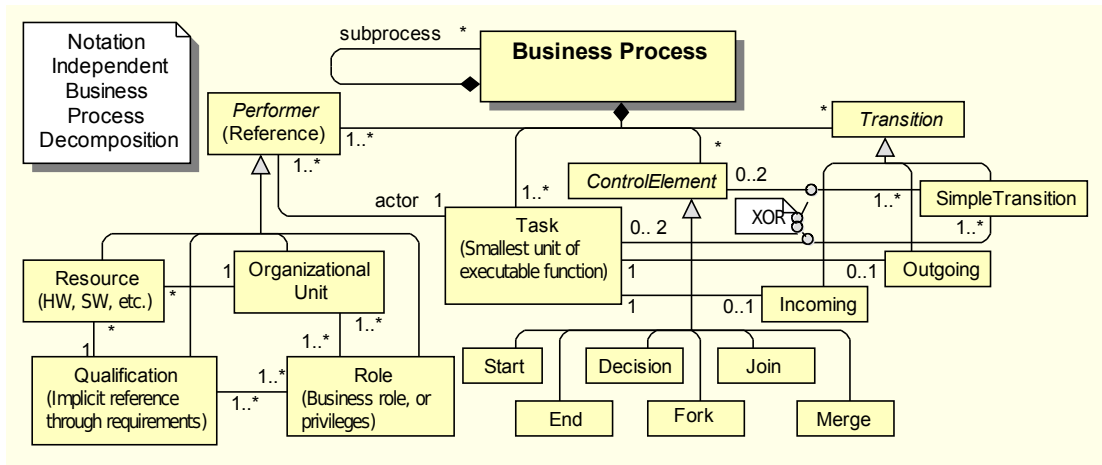


Fig. 2 Business process metamodel containing classes

This business process metamodel with classes is similar to that of the OMG process definition metamodel standard draft, which was developed later [6.3]. It should be noted that part of the metamodel for task performers in the author's metamodel is more detailed than in the standard draft proposed by OMG.

A harmonized or "notation independent" metamodel of the business process environment and its elements (Fig. 1, Fig. 2) is used as a "canonical form" of the business process metamodel in all further research (Chapters 2, 3 and 4). Though the developed metamodel is small, it is widely applicable because it shows the main business concepts of any enterprise. Therefore, it conforms well to standards that were developed later.

1.3 Concept Mapping in Different Notations

Using a "notation independent" metamodel, the author has developed a method by which "semantically similar" modeling languages can be defined as specific views of the metamodel. The languages used for this example are UML 2.0 AD (which was only a draft of the standard version at that time) and GRAPES BM. In Fig. 3, the same business process is shown in these two notations, at the same time showing the differences between these languages, e.g., guard nodes in the GRAPES BM [6.3] language are shown as guard conditions for edges in the UML AD [6.3] language:

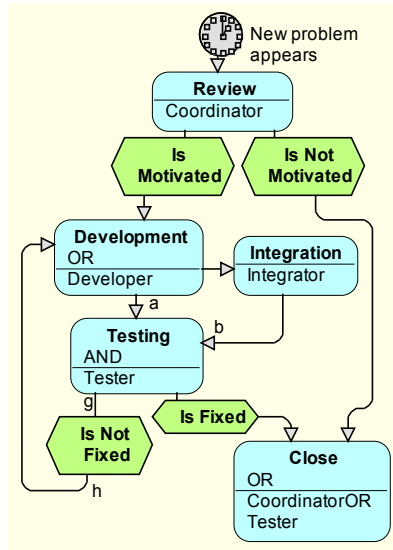


Fig. 3 A business process as GRADE BM and UML AD

The general concept mapping schema is shown in Fig. 4. The top part of the figure shows concepts necessary for business modeling (*Domain concepts*). Concepts in *Notation A* are mapped to concepts in *Notation B* using *Notation independent* concepts as mediators. In many cases, relations between language concepts are many-to-many, and are thus not sufficiently clear and traceable. To "normalize" such mappings and make them unambiguous, "intermediate concepts" are introduced, which decouple many-to-many relations between language concepts as a pair of one-to-many relations between language and intermediate concepts.

When mapping is explicitly defined using intermediate concepts, concept instances from one notation are converted to instances in another notation, as shown at the bottom of the figure. Dependency lines show <<instance of>> relations between classes and their instances. Even though, in general, case instance relations are many-to-many, for particular instances this relation is usually one-to-many, as shown in Fig. 5.

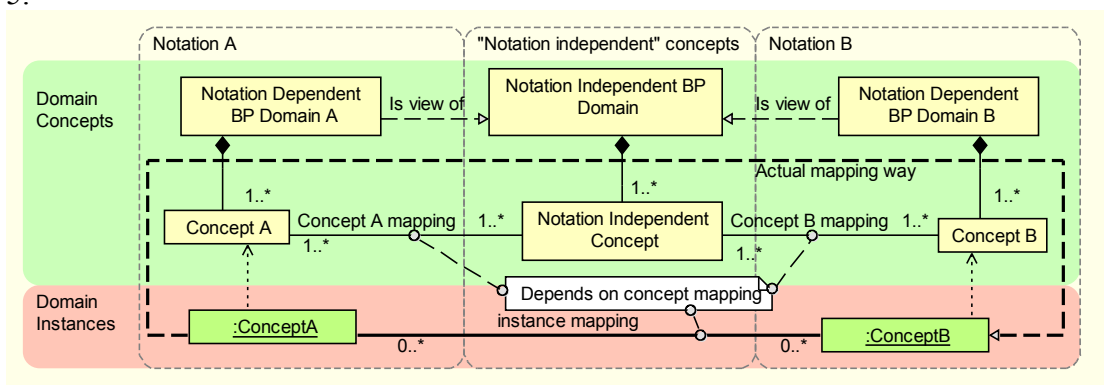


Fig. 4 The general scheme of metamodel mapping

Fig. 5 shows a fragment of the defined mapping between the GRADE BM and UML AD languages. The top part of the figure shows the domain concepts layer with GRADE metamodel classes (top left area), the UML AD metamodel (top right) classes, and the independent domain (top middle) classes. General many-to-many relations between GRAPES BM and UML AD for guard nodes and edges are decoupled using several one-to-many mappings between language concepts and

intermediate concepts (*Transition* subclasses: *Incoming*, *Outgoing* and *SimpleTransition*). The bottom section of Fig. 5 shows specific instances of these classes based on the business process example shown in Fig. 3. As shown in Fig. 5, a relation for a particular instance for both languages appears as one-to-many, so they are easily traceable.

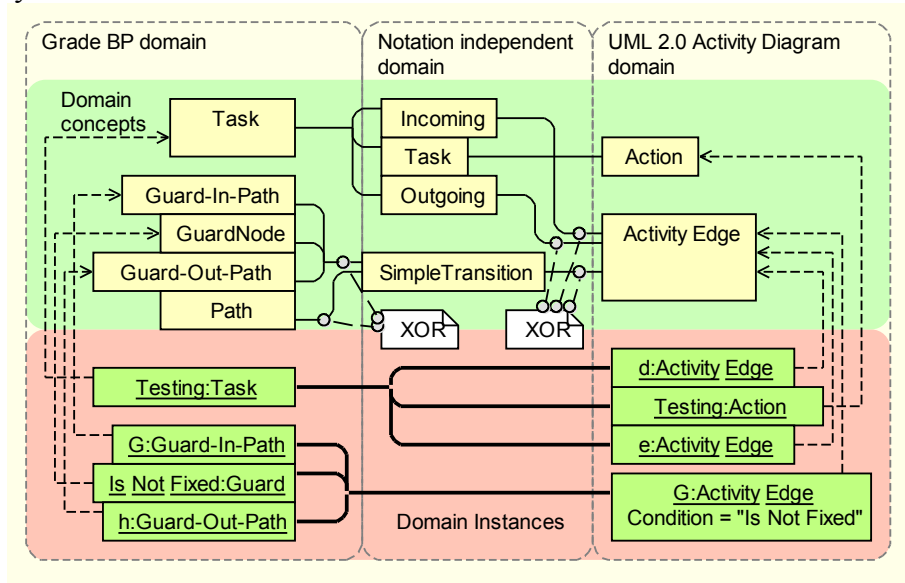


Fig. 5 Fragment of a mapping definition and class instances

As users are actually interested in a graphical representation of these two notations, the last step is creation of corresponding graphical elements (boxes and lines) in the diagram. Because domain elements are usually linked to a graphical representation as one-to-one, it is a simple task. As shown in the Fig. 5 mapping fragment, even for "semantically similar" languages technical elements can differ considerably, and this complicates concept mapping.

At the moment, a concept mapping technique is used by the OMG Domain task force group for merging the UML 2.0 AD and BPMN 1.0 languages [6.3]. Because UML AD and BPMN have even more differences than UML and GRAPES BM (e.g., AD does not have a business process equivalent to that of BPMN, which contains several processes, but BPMN does not have an equivalent to AD object flows), concept mapping either cannot be shown unambiguously, or many intermediate concepts must be introduced. However, for cases when "semantically similar" languages are also "technically similar," concept mapping is good shorthand. Recently, this approach has shown some success, e.g., for mappings between the BPMN, BPEL, XLANG and WSFL languages [6.3].

Subsequent research (described in Chapter 4) showed that complicated mappings can be effectively resolved using model transformations. In this case, mapping associations are doubly useful: in definition, they demonstrate the general mapping schema (though ambiguous), but for specific instances, they show the transformation result, pointing to the source instance for each target instance. This is necessary for model transformation traceability.

2 Business Process Measures

As the business world becomes more global and competitive, business processes are becoming more geographically distributed. To estimate overall process efficiency, it is essential to recognize costs, time and other parameters of each business process step. Business process efficiency measures are crucial to determine total costs of ownership and forecast the return on investments. Monitoring and measures are a ubiquitous element in workflow systems [6.3].

Many quality and business process management methodologies use numeric methods to measure the weaknesses and strengths of a business [6.3,6.3,6.3,6.3,6.3]. These methodologies are supported by several tools [6.3,6.3,6.3,6.3]; however, they provide the "best of the breed" methodology only for narrow areas, and cannot support several methodologies simultaneously. Measure definition and value calculation, especially for aggregations (e.g., sums, averages, minimums and maximums) are not trivial tasks using existing simulation tools and workflow systems. Advanced technical skills are required.

The goal of the research was to develop a business process measure framework that uses algorithms and constraints to measure business process elements and their aggregations in a way that provides practical data. This framework should support business measures that are defined in the business model itself. It would allow business analysts to work with measures using familiar business terminology and avoid having to deal with technical issues.

This research shows that such a framework can be developed using a metamodeling approach. The process measurement language is developed using a profile from the UML AD [6.3], but a measurement processing framework is provided through heavyweight extension of the UML metamodel [6.3].

The approach is described by presenting a business process measures example, and then providing an abstract measure definition framework.

2.1 Business Process Model

To demonstrate the principles of measure calculations, a simple business process example is used. It is defined using a UML AD [6.3]. Fig. 6 shows the business process for a shop that delivers pizzas to residential customers. The *Sell Pizzas* business process (activity in the AD) contains actions (rounded rectangles). The organizational structure is not shown separately; it can be assumed from the process description. Organizational units are shown in swimlanes, and their performers (positions/roles and resources) are shown in action compartments with parentheses. Performers pointing to positions/roles (*People*) are active: they perform manual operations. *Resources* are passive. They are necessary to perform an action and can be busy or spent in operation. The object flow is shown using flow nodes (rectangles) and data stores as parallelograms. Process measures are shown in notes (rectangles with bent corners), which are attached with dashed lines to measurable objects.

According to MOF [6.3], this business process model is an abstraction of all execution instances of the real business process; therefore, it conforms to the M1 layer.

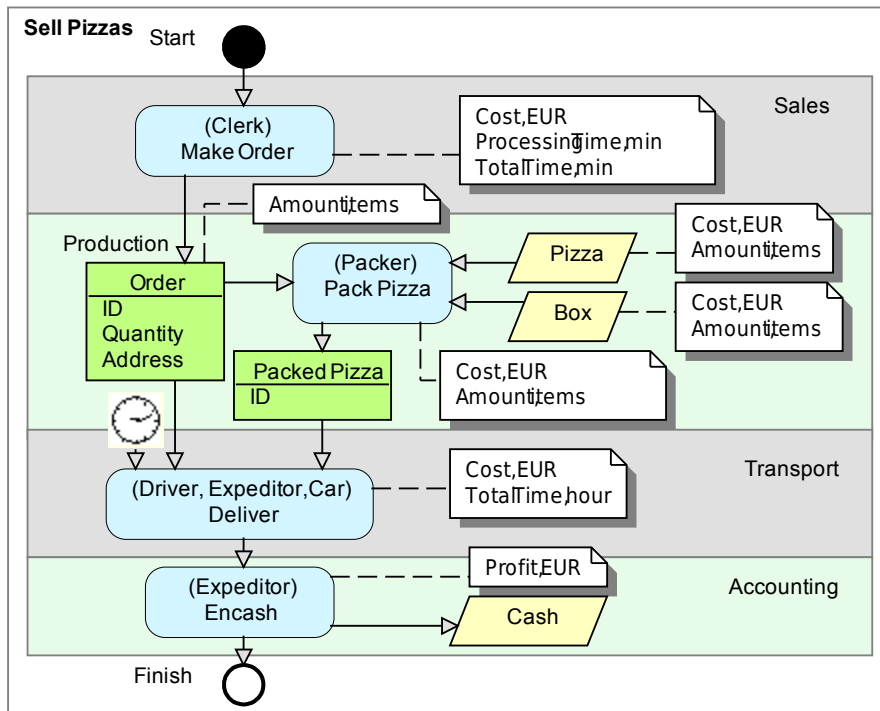


Fig. 6 Sell Pizzas business process as an Activity Diagram (M1)

The Make Order action invokes a subprocess (activity), which is shown in Fig. 7.

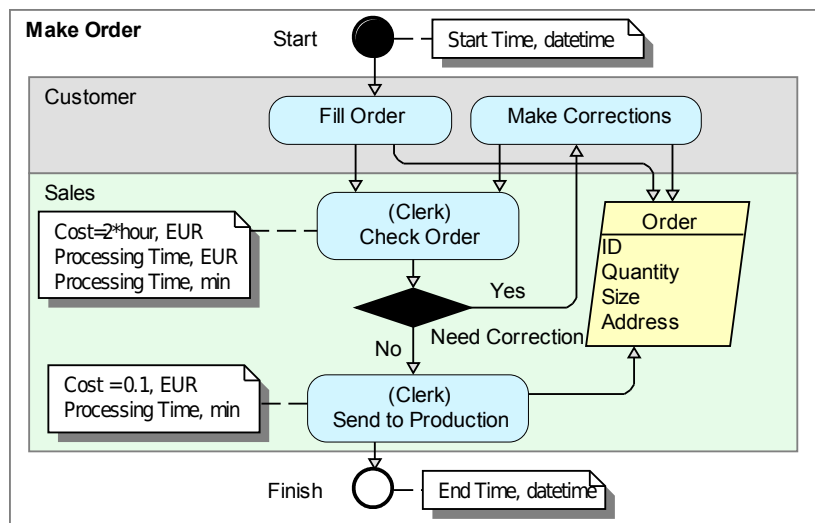


Fig. 7 Make Order business process (M1)

To support business measures, the UML AD is extended according to the UML standard with a measure definition profile. Process measures actually are attributes of the metaclass stereotype, which according to UML can be shown as notes. To improve readability, several object measures are joined in one note. Each measure declaration has the following syntax: Name[=*declaration*],Unit (e.g., *Cost=2*hour, EUR*). A measure linked to a process element means that the given measure must be evaluated during process simulation or execution.

Light classes are basically stereotypes of the UML AD. As a result of the metamodel heavyweight extension, the AD has additional aggregation associations (e.g., the *Sales* aggregation). Process measures (different shades represent different measure types) linked to process elements with *primitive/container-measure* associations are AD stereotype attributes, which are shown as "instance classes." For model readability, the measures are assigned names consisting of the first characters of the linked element name and the measurement type. (The name is not required for processing). If a measure uses another measure, the appropriate association has the role name *arg*.

The measures composition derived from the M2 layer in the M1 layer is shown according to MOF traditions, using class compartments (e.g., *unit=EUR*, *declaration= Minus(MO_Finish, MO_Start)*). Compartments defined explicitly in the business process model in Fig. 6 are shown with an asterisk. Other compartments and appropriate measure associations are derived implicitly, by creating instances of the process definition metamodel. E.g., the *MakeOrder* business process measurement *MOTotalTime* declaration is determined automatically as the difference between the process start, *MOStart*, and end, *MOEnd*, values with appropriate associations.

For model readability, other M2 level class composition instances also in the M1 level are shown as a composition. E.g., *Business Process* and *Enterprise* M2 composition instances are shown as an M1 composition with appropriate classes and their stereotypes.

2.3 Business Process Metamodel

To define rules for process element measures definition and aggregation, a specific metamodel (M2) is required to serve as a framework for all metamodel instances or process definition models (M1).

The developed business process measure metamodel is shown in Fig. 9. The figure shows how measurements are linked to each other, and how they are linked to business process elements. In this figure two diagrams are merged also: class diagram of all possible models (M1, Fig. 8) and a specific instance diagram of a more abstract metamodel (M3, Fig. 10). This business process measure metamodel basically conforms to the business process metamodel (Chapter 1) with the following differences:

- ❑ All classes are instances of the extended metamodel (M3).
- ❑ Although light classes conform to UML AD profile stereotypes (e.g., *BusinessProcess* as a stereotype for *Activity*), in addition to the associations defined in UML, by using an extended metamodel (M3), additional associations are possible.

Associations defined in the UML and additional ones are used to determine which elements are eligible for measure aggregation. For this reason, a completely new binary association could be used. Though using existing UML associations, the number of additional associations is reduced and the metamodel is more readable. Aggregation (composition) associations show that for an appropriate "host" element, instance aggregation of the same type of measures is possible (e.g., sum, average, minimum, maximum) for all child instances.

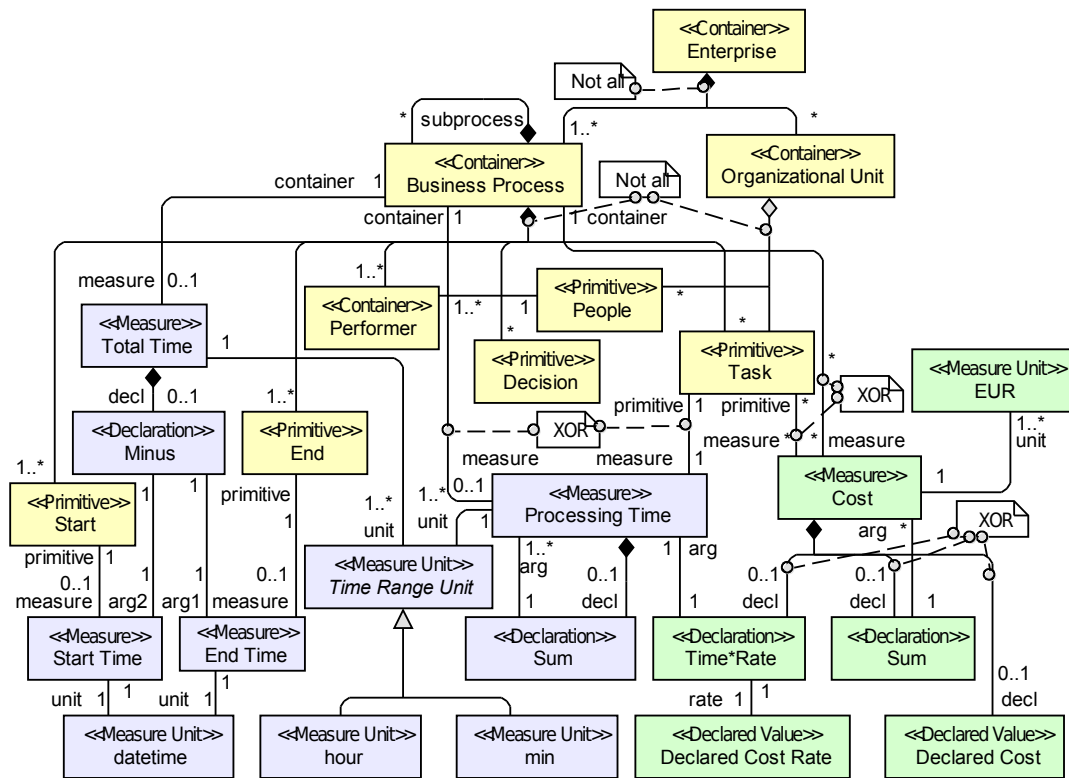


Fig. 9 Fragment of the measure declaration metamodel (M2)

`<<Measure>>` classes (different shades represent different kinds of measures) are class metaattributes (formally, UML 2.0 properties), which are carried out as separate classes and associations. This diagram also serves two purposes: as a class diagram for the M1 metalayer, and as an instance diagram for the M3 metalayer. Therefore, in accordance with the dual notation, metaattributes appear as classes. These metaattributes show the measures that can be defined for each process element (light classes).

Associations between stereotypes and metaattributes inherit specific role names: *primitive/container-measure*. If a measure declaration has an expression (which can be derived implicitly from the metamodel, or set explicitly in the model), then it is shown as a function argument set with the `<<Declaration>>` stereotype.

Fig. 9 shows possible business process measures. E.g., for a *Business Process* or *Task*, the cost can be determined as specified value (*Declared Cost*), amount of processing time multiplied by the cost rate per time unit (*Processing Time*, *Declared Cost Rate*) or sum of several costs.

The main value of this metamodel is that it shows in a demonstrative way with classes and associations the possible measures of business process elements and how measures can be declared and aggregated in a way that has practical meaning. By creating models on the basis of this metamodel, defined classes show which measure instances can be added to the model element instances, and associations show the links between measures and methods for automated processing.

2.4 Business Measure Metamodel

In accordance with MOF traditions, the metametamodel (M3) is kept simple, and all the complexity of a specific domain is represented in metamodels (M2). However,

3 Semantics of UML 2.0 Activity Diagram for Business Modeling by Means of Virtual Machine

In 2004, the UML 2.0 standard [6.3] was in the final adoption stage, and its AD was suggested for use in business process modeling. Therefore, exact execution semantics of AD was a topical issue.

The main goal of this research was to make the UML AD usable for modeling exact (i.e., executable) business processes. To achieve this, it was necessary to determine the exact execution semantics of ADs and select an appropriate subset of its elements, which was sufficient for business process modeling model validation and simulation. In the research, it was shown that original UML AD semantics defined for executable models is complicated and not described clearly enough. Therefore, the author proposes a new approach, describing existing AD semantics with an activity diagram virtual machine (ADVMM). To describe the semantics, a minimal subset of AD elements was chosen as required for business process definition. It is shown how a formal UML AD definition model can be translated to a simpler and more convenient execution model, which at the same time conforms to the original execution semantics for the selected subset of AD elements.

Such an approach, which relies on the original AD notation as much as possible in defining semantics, in contrast to absolutely formal algebraic methods (e.g., Petri nets [6.3]), is more suited for exact analysis of diagram behavior, even if it does not support formal mathematical analysis. In addition, the developed VM can be used as a basis for practical implementation of a simulation tool or workflow management system engine.

3.1 Subset of the UML 2.0 Activity Diagram and UML Limitations

Because a number of UML 2.0 AD concepts are actually optimized for development of embedded systems, the author has chosen only those elements that are necessary for business modeling. AD model behavior is determined by tokens, which flow from node to node through edges starting at an activity initial point and ending at the final point. Different tokens can be used for data transfer from one action in the activity to another. Therefore, when determining required elements, only those are chosen that have a direct influence on token movement. In practice, these are actions and control nodes, as well as edges with guards connecting them.

There are few works analyzing the execution semantics of AD control flows alone [6.3,6.3,6.3]. An analysis of the AD data flow separately from the control flow in [6.3] concludes that AD is not "workflow complete." However, in the author's research analyzing data and control flows in an integrated approach, it is shown that ADs are usable for formal and exact definitions of business processes.

Fig. 11 shows two activity diagrams, which illustrate all chosen elements. The main AD *Process Order* invokes another one: *Make Payment*. The main process starts with the initial node, then the process flows through decision, fork, join and merge nodes and finishes in the activity final node. The *Make Payment* action invokes the subordinated activity, which starts and finishes with activity parameter nodes. All flows (control and object) have pins at their action ends (and also at the initial and final nodes), as required by the selected subset. The advantage for semantics definition of using these explicit pins is that tokens always have a place to "live," much in the same way as places are used in Petri nets.

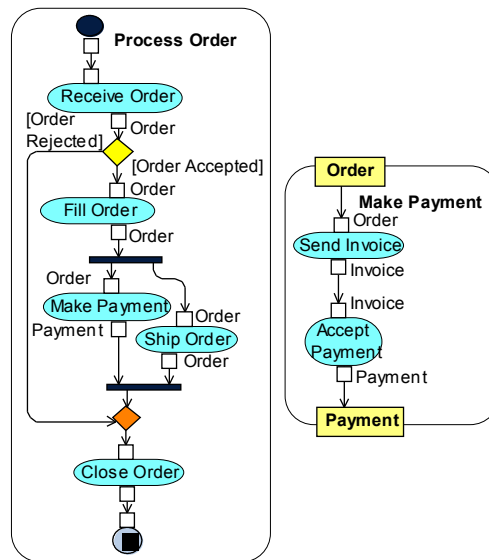


Fig. 11 Sample activity diagram "Process Order," which invokes "Make Payment"

Because branching in diagrams is shown explicitly with decision and fork nodes, only one edge can extend from the pin. Guards for edges outgoing from decisions are mutually exclusive and do not change over time. In addition, the following nonstandard connections are disabled:

- The outgoing edge of a ControlNode cannot be an incoming edge for the same ControlNode. This prevents deadlocks between control nodes waiting for input.
- No paths are allowed between *CallBehaviorActions*, *InitialNodes*, *FinalNodes* or *ActivityParameterNodes* containing both *ForkNodes* and *JoinNodes*. This is reasonable from the practical point of view, because there is no need to create parallel branches if they are simply joined back without any operation in these branches (i.e., there is no *CallBehaviorAction* between them).

These restrictions in general do not limit the development of natural business processes, but eliminate the "race for tokens" and the undetermined execution of diagrams. Thus, token movement rules are significantly simplified.

3.2 General Description of the UML 2.0 Activity Diagram and Proposed Virtual Machine

3.2.1 Standard Semantics of Activity Diagrams

In the UML standard, AM semantics is described in a highly distributed manner, where each AD element has its role in AD execution [6.3,6.3,6.3]. Each fork, decision, merge and join node processes the token flow in its own way by "offering" tokens to actions. The "offering" of a token simply means that control nodes make tokens "visible" to actions, and an action is executed "when all of the input pins are offered tokens and accept them all at once, precluding them from being consumed by any other actions" [6.3]. This means that actions use pull semantics for token processing, and the only active elements in a diagram are the "action engines," which try to fill up their input pins with a fresh sets of tokens to be consumed by these actions.

A "standard ADVM" could be defined with "action engines" as the only active elements and control nodes as "token visibility switches," but it would be highly complicated because visibility rules are obviously non-local (distributed) operations with many more operating and dependent elements.

3.2.2 General Principles of the Developed ADVM

The author proposes a different version of the ADVM, in which control nodes ("unstable places," where tokens cannot be located) and edges are "truncated" in paths. As a result, paths connect nodes where tokens can be located ("stable places"), which are usually input and output pins (for actions, initial and final nodes), as well as activity parameter nodes (for activities). Each path has a condition: the guards of its edges are "anded" together. The abovementioned diagram constraints ensure that paths are mutually exclusive. Even if a pin is a start point for several paths, for a particular token only one path is allowed.

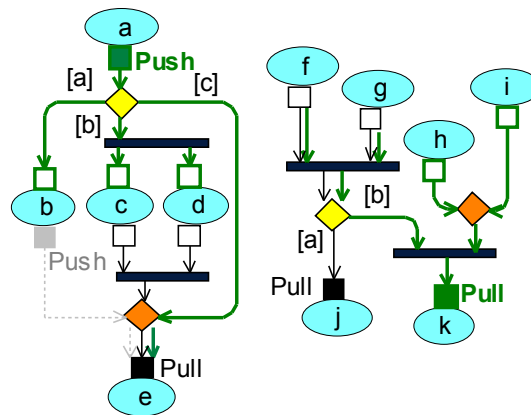


Fig. 12 Creation of push and pull paths for different connections

"Stable places" are served by active elements: token engines. Two types of engines are introduced, push and pull engines, as well as push and pull paths. Push paths are those containing only decision, merge and fork nodes, or no control nodes at all. A push path is "serviced" by a push engine in its start node, the corresponding output pin. In the proposed subset, tokens from an output pin can be pushed via push paths independently from each other directly to their destinations, input pins, whenever path conditions permit it. Thus, token movement is very transparent in the push case.

Pull paths are those containing at least one join node, and decisions and merges. Pull paths are serviced by a pull engine at their destination, an input pin. According to AD semantics, the movement of tokens along pull paths having a common destination must be coordinated; only an adequate set of tokens can jointly pass a join node.

The action engine is much simpler than its counterpart in the original standard semantics. Its sole task is to seize one token from each input pin (or an entire group, if this is a pull pin), when a complete set is present and to "consume" this set, and provide output pins.

The main semantic difference between the proposed and the standard action engine is that for the proposed engine, tokens or groups are moved by token engines independently of each input pin, while the standard engine pulls them from output pins "all at once." However, this cannot lead to serious differences in behavior, since real "races for tokens" by several actions are impossible in the proposed subset.

3.2.3 Metamodel Extensions and Model Mapping

To formally define an ADVM, a specific AD execution metamodel must be created with all required classes and operations. For each AD, a diagram execution model is created using model transformation.

Fig. 13 shows the original AD and its run-time metamodels (virtual machine) combined; the original classes are light and the new ones are dark. Whenever possible, the corresponding classes in both metamodels are linked by special bidirectional associations (so-called mapping associations, introduced in Chapter 1.3, dashed lines).

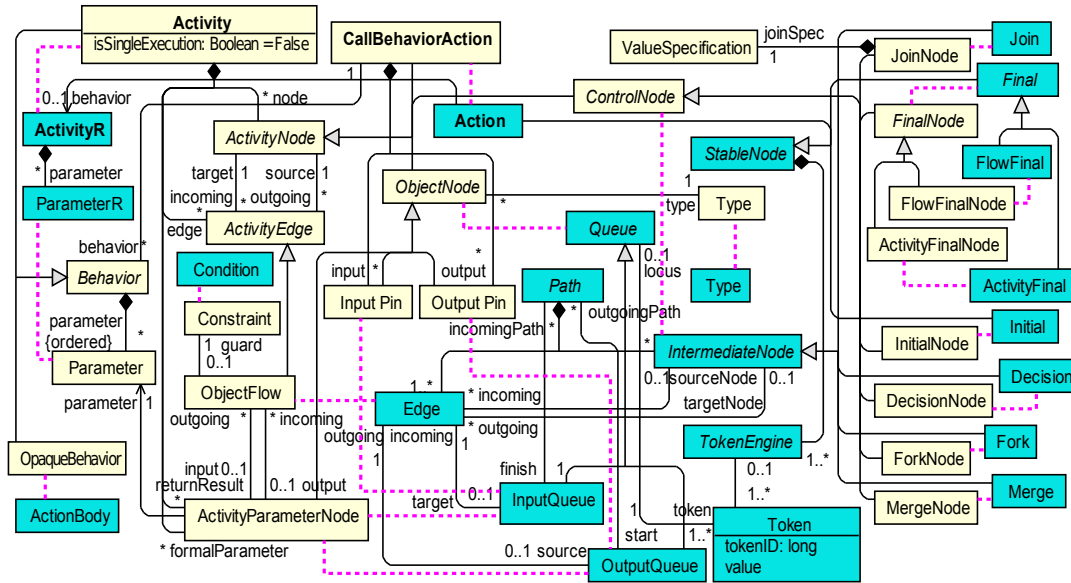


Fig. 13 Subset of the UML AD and relations to run-time classes

When an activity is invoked, corresponding run-time class instances are created for the activity instance and all its components. These instances act as the virtual machine executing the given activity. Fig. 13 represents a "general transformation schema," where the mapping associations have a formal semantics in this transformation. In the direction from a definition class to run-time class it means that in the transformation process for each instance of the definition class, one instance of the run-time class should be created. In the opposite direction it shows from which definition instance the run-time instance is created. This information is used when new instances must be created with specific properties that can be retrieved only from the source (definition) model.

Fig. 14 shows the metamodel of the proposed ADVM. This diagram is another view of the metamodel shown in Fig. 13, but with more detailed run-time classes. It shows the complete set of classes, associations and operations required for execution of the proposed VM.

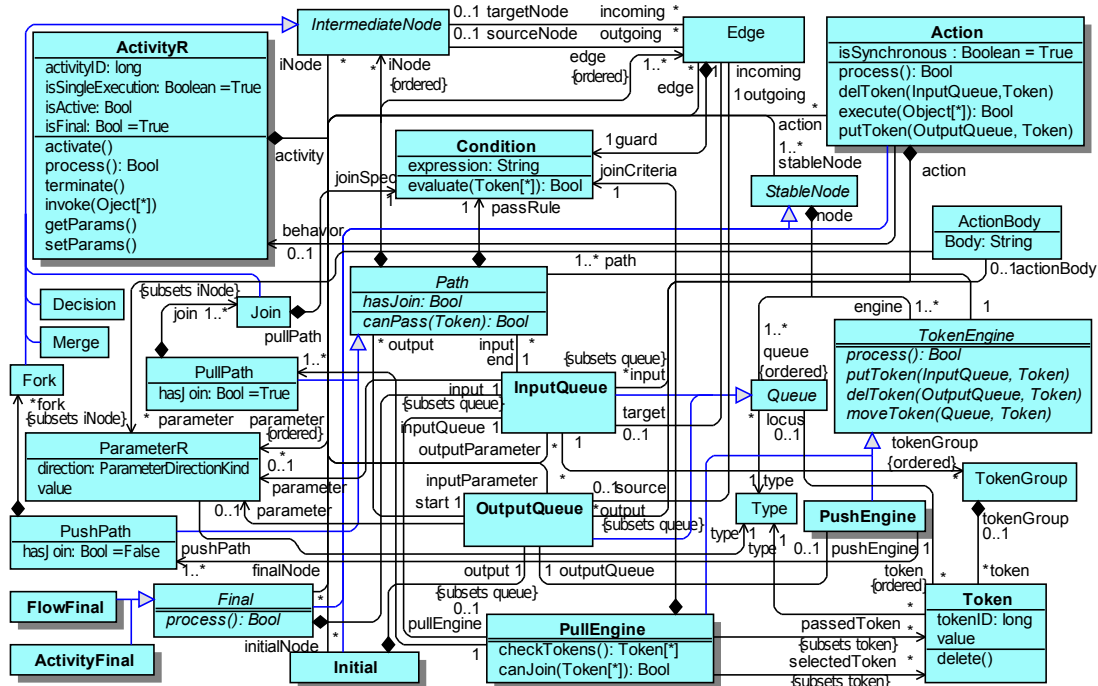


Fig. 14 Metamodel of the ADVM

The creation (transformation) of each execution element and its behavior is completely described in the publication. Java pseudocode is used where a procedural approach is better, but OCL constraints are used when a declarative approach is appropriate. As shown in Chapter 4, such a transformation also can be defined with a specialized model transformation language, e.g., MOLA.

Because the proposed VM works differently than the original one on the token movement level, it must be proven that both work the same on an action execution level. Therefore, this research proves that, in the proposed VM, even if movement times for particular tokens differ, the token paths and action execution start and end times fired by tokens in the selected subset are the same.

This proof is based on the following:

- The fact that, in the selected subset of AD elements, both original and proposed VMs work in a determined way.
- Even if, in the proposed VM, a token can arrive at its destination "stable place" earlier than in the original machine, the last token always arrives at its destination at the same time, when the original machine takes all its tokens "at once."

It can be concluded that, on the level of action execution, the proposed VM works the same as the original one, but the proposed machine is much simpler. (In the publication, an entire chapter is devoted to proving this.)

Pseudocode and OCL constraints also demonstrate machine behavior (token movement) graphically and precisely. A machine built in such way is actually the design of a validation or simulation engine. The proposed approach can be used as a basis for developing a workflow management system engine.

4 Use of UML and Model Transformations for Workflow Process Definitions

Model driven architecture (MDA) using model driven development (MDD) is taking on an increasingly significant role in the development of business management systems. In turn, model transformations substantially facilitate the development process in MDD style for different system development steps of the system lifecycle. When using a model-based approach to develop business systems, an exact business modeling language is necessary. As there is no single "killer notation" for workflow modeling, quite often, quick transformation from one modeling language to another is necessary.

The goal of the research was to prove it is possible to define exact and automatically executable model transformations, which allow changing business models from one notation to another without losing model semantics.

The approach is illustrated using two of the most popular modeling languages: UML AD [6.3] and BPMN [6.3] (both are currently supported by OMG). Transformations are executed using the MOLA model transformation language. However, the approach is not limited to this specific choice of target notation; a reverse transformation or a completely different transformation using other modeling languages could be treated in a similar way.

The research briefly discusses the workflow aspects that are required in practice, and on this basis, a natural AD profile and appropriate subset of BPMN are proposed. The selection of the proposed AD profile and the subset of BPMN are based on findings performed in previous research (Chapters 1, 2 and 3), with added functionality for business-to-business (B2B) features. The semantics of both languages is analyzed by focusing on distributed business processes, process performers and model execution.

As mentioned in Chapter 1.3, at the moment, the OMG Domain Task Force is working on merging the AD and BPMN languages [6.3] by relating concepts in these languages using a mapping approach [6.3]. However, considering the complicated nature of concept relation in these languages, the author shows how this relation can be shown in a more exact and effective way using model transformations.

4.1 Languages for Workflow Design and their Role

Obviously, workflow definition requires an easy readable graphical language with clear execution semantics [6.3,6.3]. Two modeling languages, UML AD and BPMN, were selected from several reviewed modeling languages to demonstrate the approach. UML AD and BPMN were selected because they best satisfy all workflow definition requirements. Further, execution semantics of the chosen languages is analyzed in this paper, with emphasis on business process specifics and how language graphical aids can represent them.

Because UML ADs are clarified in such way that their elements are more appropriate for embedded systems, some AD tailoring is necessary before it can be used for business process modeling. In other words, a DSL (domain specific language) as a profile of the UML is necessary, where introduced stereotypes hide the found AD deficiencies for practical workflow definition. As the transformation target, the BPMN language is chosen. It is partially supported by tools [6.3]. But this language has its own set of deficiencies, especially the informal semantics and lack of adequate features for data definition. The usability of BPMN for workflow definition is briefly analyzed in order to identify a relevant subset.

To determine clear execution semantics of both languages in business processes, they are mapped to the sole practically executable process modeling language at the present time: BPEL [6.3]. In cases where the means of expression defined in the standard are not satisfactory, BPEL is extended using *de facto* industry standard means used by vendors implementing this language.

4.2 Adjusting UML Activity Diagrams for Workflow Definition

Several AD profiles for defining workflows have been proposed [6.3,6.3,6.3], but none covers all the required business modeling features: cooperation of distributed processes with messages, data processing, the description of manual task performers and the ability to execute a process model. Therefore, the proposed AD is specially tailored. A list of recommended AD features for workflow definition is selected, retaining the original semantics of AD elements, and including some stereotypes that add missing properties and constraints required for distributed workflows.

Fig. 15 shows a workflow example with two activities illustrating the chosen elements. (This and all further diagrams are modeled by using the GMF (EBM) tool [6.3], where additional editors for UML AD profile and BPMN languages were developed.) These diagrams show practically all elements chosen for workflow modeling. Most of the elements are chosen from previous research (Chapters 1, 2 and 3). Elements typical for B2B cooperation are also added.

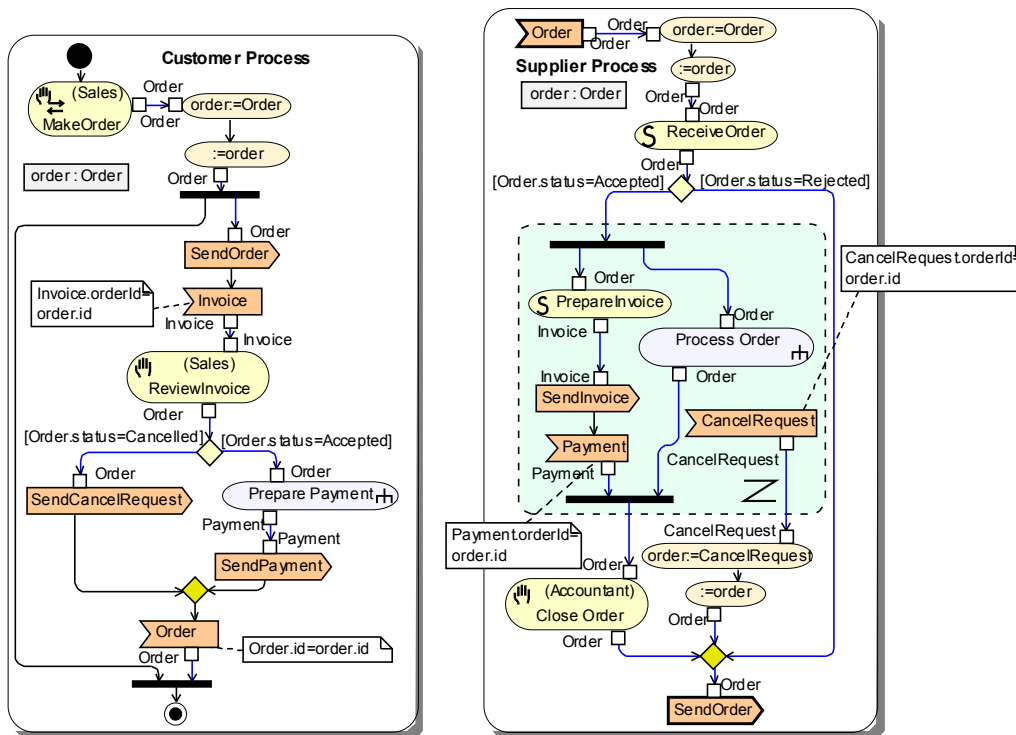


Fig. 15 Example of a process using UML ADs

New elements are *SendSignal* and *AcceptEvent* actions (convex and concave flags, respectively), and stereotypes for different kinds of actions. The element `order : Order` is a variable definition of type `Order`, with the scope of activity `Supplier Process`. Write variable actions are presented as normal assignments to the variable, and simple OCL syntax is used for expressions.

AcceptEvent actions with data based guard conditions for the outgoing object flow are specific patterns for locating the relevant process instance at message reception, which is equivalent to the use of explicit correlation sets in BPEL.

Using stereotypes, the semantics of some AD elements is adjusted to meet the requirements of distributed workflow modeling. The metamodel in Fig. 16 illustrates the introduced AD stereotypes:

- ❑ *MainProcess* (stereotype for Activity) is a separate workflow process (executed by an individual workflow engine). Graphically, it is shown as a shadowed activity.
- ❑ *Performer* (stereotype for Partition) represents a performer of a manual or user action. Its `represents` association must reference a class with the *Position* or *OrgUnit* stereotype. It is shown as a compartment of the action.
- ❑ *WebService* (stereotype for Component) is used to describe web service attributes. *CallServiceTask* actions, which invoke operations within this service, get their technical parameters from *WebService*.
- ❑ *IntermSSAction* means sending a specified signal to a web service (it is shown as a simple convex flag). *EndSSAction* (shown as a convex flag with a bold border) means sending a signal as the final action of the activity.
- ❑ *ForEach* is a stereotype for *LoopNode*. It has an additional `ForEach.collection` association that references the *ValuePin*. It is introduced for iterators (the requirement for iterators in business modeling languages also mentioned in [6.3]). It is the only place where heavyweight extension is used, to preserve metamodel compatibility.

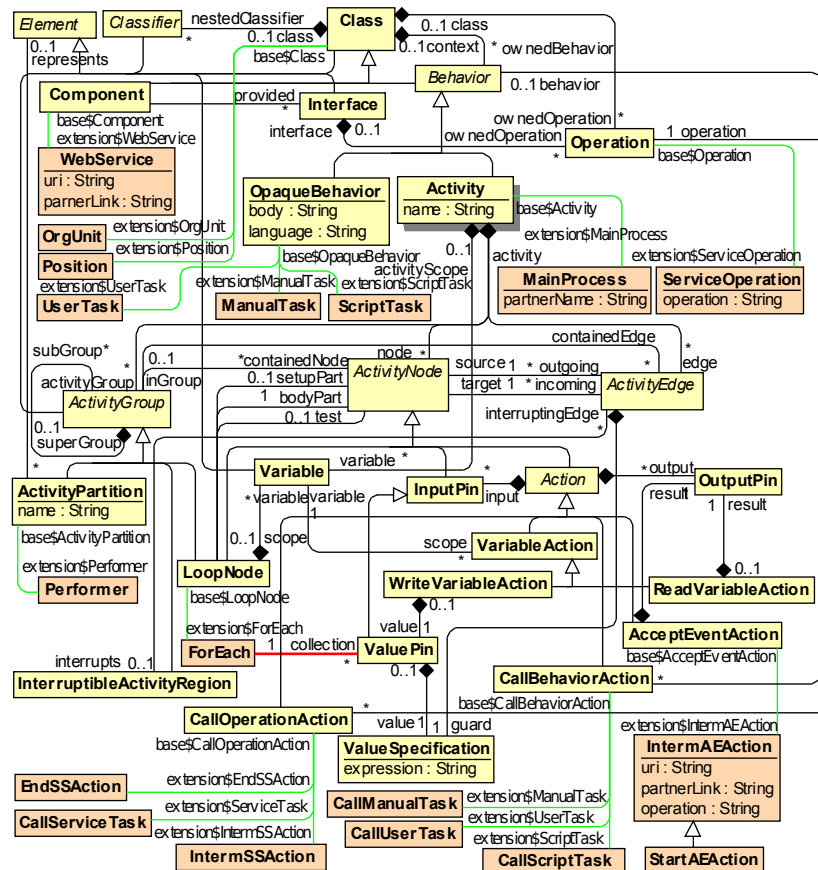


Fig. 16 Fragment of the AD metamodel (source of model transformation)

Fig. 16 shows a UML AD metamodel fragment that is "flattened" because redundant abstract superclasses are eliminated, and it has "applied" the proposed workflow modeling profile. According to the MOF standard, profiled classes are linked to main classes with specific associations (e.g., `extension$Position <-> base$Class`). Instances of this metamodel are the source for transformations described in Section 4.4.

4.3 BPMN Diagrams as Another Notation

As noted at the start of Chapter 4, BPMN is also a widely used language for workflow definition. As BPMN also has redundancy and some deficiencies, a BPMN subset is proposed in this paper. All kinds of *Gateways* (diamonds), all types of *Tasks* and *Subprocesses* (rounded rectangles), *Start* and *End* events, and *IntermediateEvents* (circles) attached to the boundary of an *Activity* ("interrupt construct") are chosen because they all have a natural semantics and mapping to BPEL.

Fig. 17 shows a process example in the chosen subset of a BPMN notation. Both processes shown here are precise analogues of processes shown in Fig. 15, which are obtained by applying practical MOLA language transformations in the GMF tool, and using the tool's automatic layout possibilities.

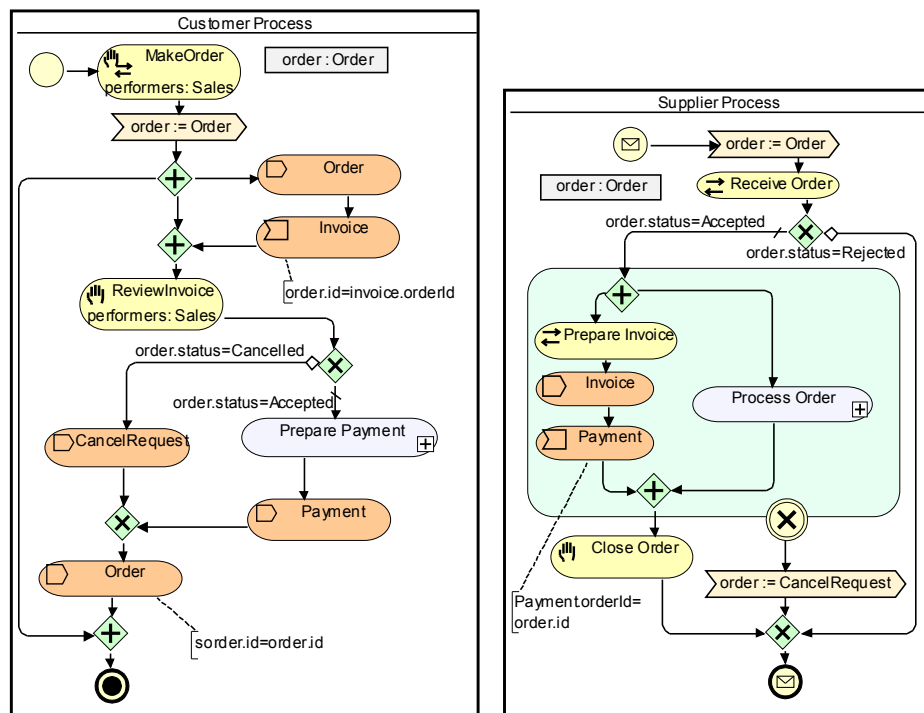


Fig. 17 Process example in BPMN

For receiving messages in non-interrupt situations, *ReceiveTasks* are preferred. For sending messages in non-interrupt situations, *SendTasks* are preferred. In both cases, the tasks are represented by rounded rectangles with concave and convex flags inside. While the implicit BPMN metamodel is quite acceptable, the BPMN graphical notation lacks some important elements. Therefore, a notation for following elements is introduced:

- ❑ A stereotyped (with icons) notation for task types and an explicit compartment for task performers are used.
- ❑ Properties are represented as rectangles containing `name : type`.

- To make the data aspect visible, assignments are represented as large arrows containing textual assignment statements.

Similarly to UML ADs, Fig. 18 shows a fragment of the proposed BPMN subset. The instances of these elements appear as the transformation result.

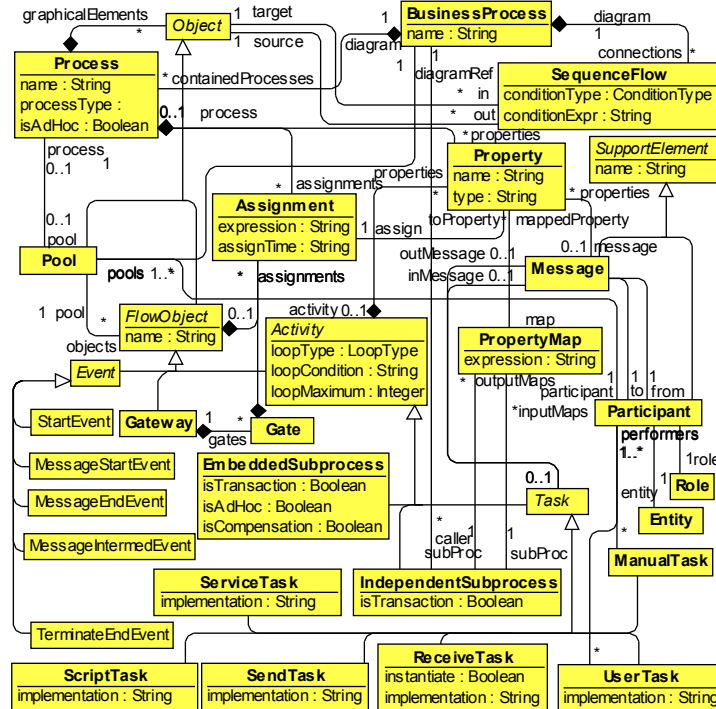


Fig. 18 Fragment of the BPMN metamodel (target for transformation)

4.4 AD to BPMN Transformation

Although there are several research papers that mention formal process transformations [6.3,6.3], no existing formalized transformations from UML ADs to BPMN supporting all workflow related aspects were found. Therefore, the author uses existing AD-to-BPMN mappings [6.3,6.3,6.3,6.3,6.3,6.3] and extends them for data flows, variables, assignments and task performers.

To refine the mapping, in this paper an illustrative fragment of the formal transformation generating a BPMN model from an AD model is provided. The transformation is written in the MOLA language [6.3]. Fig. 16 and Fig. 18 represent the source and target metamodels of the transformation, respectively, but Fig. 19 illustrates the main program of the transformation, which transforms each *Activity* to a new BPMN Process and Pool, and invokes subprograms transforming all other elements for this *Activity*.

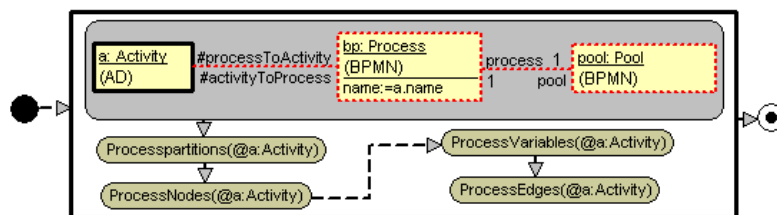


Fig. 19 Main transformation program of AD to BPMN

The MOLA program formally and completely describes the concept mapping between these two notations. As shown in Fig. 19, several classes and associations with context are required, which is quite complicated, and cannot be clearly described simply by using mapping associations. Model transformation is the best method for defining a complicated mapping between two notations, while preserving the semantics.

Transformation is performed using the GMF (EBM) tool, using the MOLA language editor and with developed editors for the AD and BPMN languages. The implementation shows the efficiency of the approach: small models with several tens of classes were transformed in a few seconds on a standard personal computer. On the basis of this research, a new model transformation framework is under development. It uses an in-memory repository for model transformations, and this allows executing model transformations for industrial needs.

5 Conclusion

The goal of the thesis is to analyze and use a metamodeling approach to define exact (i.e., executable) business processes. Some of the business process metamodeling ideas developed by the author are already implemented in existing modeling tools, but others can be used for the development of new tools. The following is a list of the author's ideas concerning the latest business process modeling events:

- The "notation independent" business metamodel proposed at the start of the research shows business concepts and their relations, and it served as the basis for all further investigations. The proposed ideas have some similarity to the OMG Business motivation model [6.3] and Process definition model [6.3] standard drafts, which were proposed later. However, in the author's metamodel, the part used for process inputs, outputs and task performers is more detailed than in the standard drafts. On the basis of the slightly modified metamodel, the author has developed editors for the UML AD and BPMN languages in the GMF (EBM) tool [6.3].
- The author's proposal for concept mapping from one domain to several presentations is used in the GMF tool, where the same business model can be shown in several similar modeling languages. The idea of representing similar languages as different views of a "canonical form" has recently been reflected in the OMG initiative, which attempts to join the UML AD and BPMN modeling languages in a single domain [6.3].
- The transformation examples of the MOLA [6.3] language executed during the research represent a considerable contribution toward the validation, testing and demonstration of the MOLA tool. The idea of business model transformations from one language to other is realized in the MOLA tool, allowing several users to use the most convenient modeling language in different stages of developing business management systems.
- At this time, the University of Latvia IMCS has started developing a new generation modeling tool platform based on model transformations (TTF [6.3]), where model transformations are realized in the MOLA language. Development of specialized modeling tools for domain-specific languages (DSL) will be one of the possible usages of this new generation tool platform. For example, it will be possible to build different business modeling tools on the platform. The author's developed UML AD profile and subset of the BPMN language can be used as a basis for developing process modeling editors on this platform. In turn, the author's developed ADVN and business measure framework can be used to develop a process simulation engine. In this way, all necessary functionality for business process modeling and simulation will be provided.

6 References

6.1 Referenced Papers by the Author

1. Vitoliņš Valdis, Audris Kalnins. Modeling Business. Modeling and Simulation of Business Systems, Kaunas University of Technology Press, Vilnius, May 13-14, 2003, pp. 215.-220.
2. Vitoliņš Valdis, Business Process Measures. Computer Science and Information Technologies, Databases and Information Systems Doctoral Consortium, University of Latvia Scientific Papers Vol. 673, University of Latvia, 2004, pp. 186.-197.
3. Valdis Vitoliņš, Audris Kalnins, Semantics of UML 2.0 Activity Diagram for Business Modeling by Means of Virtual Machine, Proceedings of the Ninth IEEE International EDOC Enterprise Computing Conference, IEEE, 2005, pp. 181.-192.
4. Audris Kalnins, Valdis Vitoliņš, Use of UML and Model Transformations for Workflow Process Definitions, Databases and Information Systems, BalticDB&IS'2006, edited by Olegas Vasilecas, Johann Eder, Albertas Caplinskas, Vilnius, Technika, 2006, pp. 3.-15.

6.2 Other Publications by the Author

5. Vitoliņš Valdis, Darba plūsmas pārvaldība, e-pasaule (2001), Nr. 5, 6
6. Vitoliņš Valdis, Microsoft dokumentu pārvaldības rīks SharePoint, e-pasaule (2001), Nr. 7
7. Vitoliņš Valdis, IT projektu pārvaldība, e-pasaule (2001), Nr. 9
8. Vitoliņš Valdis, Zināšanu pārvaldības sistēmas, e-pasaule (2002), Nr. 9
9. Vitoliņš Valdis, Organizācijas modelis biznesa procesu automatizācijā, e-pasaule (2002), Nr. 10
10. Vitoliņš Valdis, Biznesa modelēšanas rīki, e-pasaule, (2003), Nr. 9

6.3 Other Sources

11. Unified Modeling Language: Superstructure version 2.0, OMG, 2005, <http://www.omg.org/cgi-bin/doc?formal/05-07-04>
12. Unified Modeling Language (UML) Specification: Infrastructure, Version 2.0, OMG, 2005, <http://www.omg.org/cgi-bin/doc?formal/05-07-05>
13. OCL 2.0 Specification, Version 2.0, OMG, 2005, <http://www.omg.org/cgi-bin/doc?ptc/05-06-06>
14. MOF2 Versioning Final Adopted Specification, OMG, 2006, <http://www.omg.org/cgi-bin/doc?formal/2006-01-01>
15. Business Process Modeling Notation (BPMN), Final Adopted Specification, OMG, 2006, <http://www.omg.org/cgi-bin/doc?dtc/2006-02-01>
16. Business Process Execution Language for Web Services, Version 1.0, IBM, 31 July 2002, <ftp://www6.software.ibm.com/software/developer/library/ws-bpel1.pdf>
17. Grady Booch, James Rumbaugh, The Unified Modeling Language User Guide, Addison-Wesley Longman, 1999
18. Business Process Specification Schema v1.01, Business Process Team, 11 May 2001
19. Osterwalder, S. Ben Lagha, Y. Pigneur, An Ontology for Developing e-Business Models, INFORGE, Ecole des HEC, 2002
20. ESPRIT project ADDE, <http://www.fast.de/ADDE>
21. The Zachman Institute for Framework Advancement (ZIFA), <http://www.zifa.com>
22. System Architect, Tutorial, 2001, Popkin Software, http://www.popkin.com/products/product_overview.htm
23. Andreas Dietzsch. Adapting the UML to Business Modelling's Needs - Experiences in Situational Method Engineering, UML 2002. LNCS 2460, pp. 73-83
24. International Standard, ISO/DIS 9001 Quality management systems — Requirements, International Organization for Standardization, <http://www.iso.com>
25. Sandy Tyndale-Biscoe. Business Modelling for Component Systems with UML. Proceedings of the Sixth EDOC Conference (2002)
26. Osterwalder, An e-Business Model Ontology for the Creation of New Management Software Tools and IS Requirement Engineering, Ecole des Hec, Université de Lausanne, 2002

27. Business Process Modeling Notation. Working Draft (0.9) November 13, 2002, Business Process Management Initiative (BPMI), <http://www.bpmi.org>
28. Mark C. Paulk, et al., The Capability Maturity Model: Guidelines for Improving the Software Process, Addison Wesley Professional, 1995
29. Douglas T. Hicks, Activity-Based Costing: Making It Work for Small and Mid-Sized Companies, 2nd Edition, John Wiley & Sons, 2002
30. Robert S. Kaplan, David P. Norton, The Strategy-Focused Organization: How Balanced Scorecard Companies Thrive in the New Business Environment, Harvard Business School Press, 2000
31. Farok J. Contractor, Valuation of Intangible Assets in Global Operations, Quorum Books, 2001
32. ARIS 6 – Collaborative Suite, System White Paper, IDS Scheer, 2003, <http://www.ids-scheer.com/sixcms/media.php/1186/ARIS+6-2+SWP+en+2003-07.pdf>
33. System Architect, Tutorial, 2001, Popkin Software, http://www.popkin.com/products/product_overview.htm
34. QPR Process Guide White Paper, QPR ScoreCard White Paper, 2002, QPR Software Plc, http://www.qpr.com/protected/whitepapers/QPR_ScoreCard_WhitePaper.pdf
35. Casewise Corporate Modeler Product Info, Casewise, <http://www.casewise.com/products/corporate-modeler/corporate-modeler.php>
36. Stephen A. White, Process Modeling Notations and Workflow Patterns, March 2004, <http://www.omg.org/bp-corner/pmnm.htm>
37. R. Eshuis, R. Wieringa, Comparing Petri Net and Activity Diagram Variants for Workflow Modelling - A Quest for Reactive Petri Nets, Lecture Notes in Computer Science: Petri Net Technology for Communication-Based Systems: Advances in Petri Nets, Volume 2472, 2003, Heidelberg, Germany: Springer-Verlag, pp. 321 - 351.
38. Harald Störrle, Jan Hendrik Hausmann, Towards a Formal Semantics of UML 2.0 Activities, 2004, <http://www.pst.informatik.uni-muenchen.de/~stoerrle/V/AD-11-Limits.pdf>
39. Harald Störrle, Semantics and Verification of Data Flow in UML 2.0 Activities, 2004, <http://www.pst.informatik.uni-muenchen.de/~stoerrle/V/AD2b-DataFlow.pdf>
40. Rational Software Architect, <http://www-306.ibm.com/software/awdtools/architect/swarchitect/>
41. Conrad Bock, "UML 2 Activity and Action Models Part 4: Object Nodes," in Journal of Object Technology, vol. 3, no. 1, pp. 27-41, http://www.jot.fm/issues/issue_2004_01/column3
42. Conrad Bock, "UML 2 Activity and Action Models Part 2: Actions," in Journal of Object Technology, vol. 2, no. 5, pp. 41-56, http://www.jot.fm/issues/issue_2003_09/column4
43. Tom Baeyens, The State of Workflow, May 2004, <http://www.theserverside.com/articles/content/Workflow/article.html>
44. Derek Miers, Paul Harmon, The 2005 BPM Suites Report, Version 1.0, March 15, 2005, http://www.bptrends.com/reports_toc_01.cfm
45. Curtis Hall, Paul Harmon, The 2005 Enterprise Architecture, Process Modeling & Simulation Tools Report, Version 1.0, April 28, 2005, http://www.bptrends.com/reports_toc_02.cfm
46. Petia Wohed, et al., Pattern-based Analysis of UML Activity Diagrams, 2004, http://is.tm.tue.nl/research/patterns/download/uml2patterns_BETA_TR.pdf
47. WebSphere Business Integration Modeler, IBM, <http://www-306.ibm.com/software/integration/wbimodeler/>
48. Business Process Definition Metamodel, Revised Submission, Object Management Group, 2004, <http://www.omg.org/docs/bei/04-01-02.pdf>
49. Business Motivation Model (BMM) Specification, Adopted Specification, Object Management Group, 2004, <http://www.omg.org/docs/dtc/06-08-03.pdf>
50. Behzad Bordbar, Athanasios Staikopoulos, On behavioural model transformation in Web services, 5th International Workshop on Conceptual Modeling Approaches for e-Business eCOMO'2004, November 8-12, 2004
51. Jean Bezivin, et al., Applying MDA Approach to B2B Applications: A Road Map, Work-shop on Model Driven Development (WMDD 2004) at ECOOP 2004, Springer-Verlag, LNCS, vol. 3344, June 2004
52. Tracy Gardner, UML Modelling of Automated Business Processes with a Mapping to BPEL4WS, IBM, 2004, <http://www-128.ibm.com/developerworks/rational/library/4593.html>
53. Stephen A. White, Using BPMN to Model a BPEL Process, BPTrends, March 2005

54. A. Osterwalder, An e-Business Model Ontology for the Creation of New Management Software Tools and IS Requirement Engineering, Ecole des Hec, Université de Lausanne
55. Andrew Watson, OMG's new modeling specifications, ECMDA-FA 2005, Nuremberg, Germany, November 7-10, 2005, keynote speech
56. Armin Haller, Eyal Oren, Paavo Kotinurmi, An Ontology for Internal and External Business Processes, WWW 2006, May 23–26, 2006, Edinburgh, Scotland
57. Web Services Business Process Execution Language Version 2.0, Primer Initial Draft, 13th September, 2006
58. BPELJ: BPEL for Java technology, IBM Developerworks, 2004, <http://www-128.ibm.com/developerworks/library/specification/ws-bpelj/>
59. Oracle BPEL Process Manager, <http://www.oracle.com/technology/products/ias/bpel/index.html>
60. Draft UML 1.4 Profile for Automated Business Processes with a Mapping to BPEL 1.0, IBM, 2004, <http://www-128.ibm.com/developerworks/rational/library/4593.html>
61. The Emerging Technologies Toolkit (ETTK) <http://www.alphaworks.ibm.com/tech/ettk>
62. MagicDraw UML 10.5, <http://www.magicdraw.com/>
63. BPMI, Current Implementations of BPMN, http://www.bpmn.org/BPMN_Supporters.htm#current
64. Mike Havey, Essential Business Process Modeling, O'Reilly, 2005, ISBN: 0-596-00843-0
65. Ken Beck, Joshy Joseph, Germán Goldszmidt, Learn business process modeling basics for the analyst, IBM Developerworks, 2005, <http://www-128.ibm.com/developerworks/library/ws-bpm4analyst/>
66. Alexandre Alves, BPEL4WS 1.1 To WS-BPEL 2.0 - An SOA Migration Path, 2005, http://webservices.sys-con.com/read/155617_1.htm
67. Wil van der Aalst, Workflow Patterns, <http://is.tm.tue.nl/research/patterns/>
68. Petia Wohed, et al., Pattern-based Analysis of UML Activity Diagrams, BETA Working Paper Series, WP 129, Eindhoven University of Technology, Eindhoven, 2004
69. Petia Wohed, et al., Pattern-based Analysis of BPMN - an extensive evaluation of the Control-flow, the Data and the Resource Perspectives, BPM Center Report BPM-05-26, BPMcenter.org, 2005
70. Business Modeling & Integration Domain Task Force, <http://bmi.omg.org/>
71. Bill Moore, et al., Using BPEL Processes in WebSphere Business Integration Server Foundation Business Process Integration and Supply Chain Solutions, IBM, 2004
72. Martin Keen, et al., BPEL4WS Business Processes with WebSphere Business Integration: Understanding, Modeling, Migrating, IBM, 2004
73. Peter Swithinbank, et al., Patterns: Model-Driven Development Using IBM Rational Software Architect, IBM, 2005
74. David Skogan, Roy Grønmo, Ida Solheim, Web Service Composition in UML, The 8th International IEEE Enterprise Distributed Object Computing Conference (EDOC), Monterey, Ca., Sept 2004
75. Roy Grønmo, Michael C. Jaeger, Model-Driven Semantic Web Service Composition, 12th Asia-Pacific Software Engineering Conference (APSEC), Taipei, Taiwan, December 2005
76. Chun Ouyang, et al., Translating Standard Process Models to BPEL, BPM Center Report BPM-05-27, BPM, 2005
77. Meta Object Facility (MOF) 2.0 Query/View/Transformation Specification, OMG, 2005, <http://www.omg.org/docs/ptc/05-11-01.pdf>
78. J. Bārzdiņš, J. Tenteris, Ē. Viļums, Biznesa modelēšanas valoda GRAPES-BM 4.0 un tās lietošana, Rīga, 1998
79. Celms E., A. Kalnins, L. Lace. Diagram definition facilities based on metamodel mappings. OOPSLA'2003 (Workshop on Domain-Specific Modeling), Anaheim, California, USA, October 2003, pp. 23-32.
80. MOLA Modeling language, Institute of Mathematics and Computer Science, University of Latvia, <http://mola.mii.lu.lv/>
81. A. Kalnins, J. Barzdins, E. Celms. Efficiency Problems in MOLA Implementation. 19th International Conference, OOPSLA'2004, Vancouver, Canada, October 2004
82. A. Kalnins, J. Barzdins, E. Celms. "Model Transformation Language MOLA," Proceedings of MDAFA 2004 (Model-Driven Architecture: Foundations and Applications 2004), Linköping, Sweden, June 10-11, 2004, pp. 14-28.
83. ProGuide, <http://www.proformacorp.com/>

84. xBML, <http://www.xbmlinnovations.com/>
85. Satish Thatte, XLANG Web Services for Business Process Design, Microsoft Corporation, 2001
86. A. Ledeczki, et al., The Generic Modeling Environment, Workshop on Intelligent Signal Processing, Budapest, Hungary, May 17, 2001
87. L. Lace, E. Celms, A. Kalnins. Diagram definition facilities in a generic modeling tool, 2003, Proceedings of International Conference on Modelling and Simulation of Business Systems, Vilnius, 2003, pp. 220-224.
88. A. Kalnins, J. Barzdins. MDA Support by Transformation Based Tool. Proceedings of First International Workshop MoRSe 2006, Warsaw, Poland, October 2006, pp. 21-24.

1 Annex

1.1 Author's Reports on Thesis Results at International Scientific Conferences and Seminars

1. Vitolins Valdis, Audris Kalnins. Modeling Business, Modeling and simulation of business systems, May 13-14, 2003, Vilnius, Lithuania.
2. Vitolins Valdis, Business Process Measures, 6th International Baltic Conference on Databases and Information Systems 2004, June 6-9, 2004, Riga, Latvia.
3. Valdis Vitolins, Audris Kalnins, Semantics of UML 2.0 Activity Diagram for Business Modeling by Means of Virtual Machine, Proceedings of the Ninth IEEE International EDOC Enterprise Computing Conference, 19-23 September 2005, Enschede, The Netherlands.
4. Audris Kalnins, Valdis Vitolins, Use of UML and Model Transformations for Workflow Process Definitions, Databases and Information Systems, BalticDB&IS'2006, 7th International Baltic Conference on Databases and Information Systems, July 3-6, 2006, Vilnius, Lithuania.

1.2 Publications Included in This Thesis and Personal Contribution to the Publications by the Thesis Author

| Author | Publication | Contribution in % | Description of contribution by the thesis author |
|-----------------------------------|-----------------------------------------------------------------------------------------|-------------------|--------------------------------------------------------------------------------------------------------------------------------------------------------------------------------------------------------------------------------------------------------------------------------------------------------------------------|
| Valdis Vitolins Audris Kalnins | Modeling Business | 90 | <ul style="list-style-type: none"> ▪ analysis and summary of existing business modeling languages ▪ development of a comprehensive business process metamodel ▪ development of a concept mapping idea |
| Valdis Vitolins | Business Process Measures | 100 | <ul style="list-style-type: none"> ▪ analysis of existing business process measurement approaches ▪ development of a measurement approach based on a metamodel ▪ development of a measure metamodel and metametamodel |
| Valdis Vitolins Audris Kalnins | Semantics of UML 2.0 Activity Diagram for Business Modeling by Means of Virtual Machine | 90 | <ul style="list-style-type: none"> ▪ development of a UML AD virtual machine ▪ development of a simplified UML virtual machine |
| Valdis Vitolins Audris Kalnins | Use of UML and Model Transformations for Workflow Process Definitions | 90 | <ul style="list-style-type: none"> ▪ analysis of the UML AD and BPMN languages, development of a BPMN metamodel, development of concept mapping ▪ development of editors for the UML AD and BPMN languages ▪ development of a MOLA transformation to transform AD models to BPMN models |

